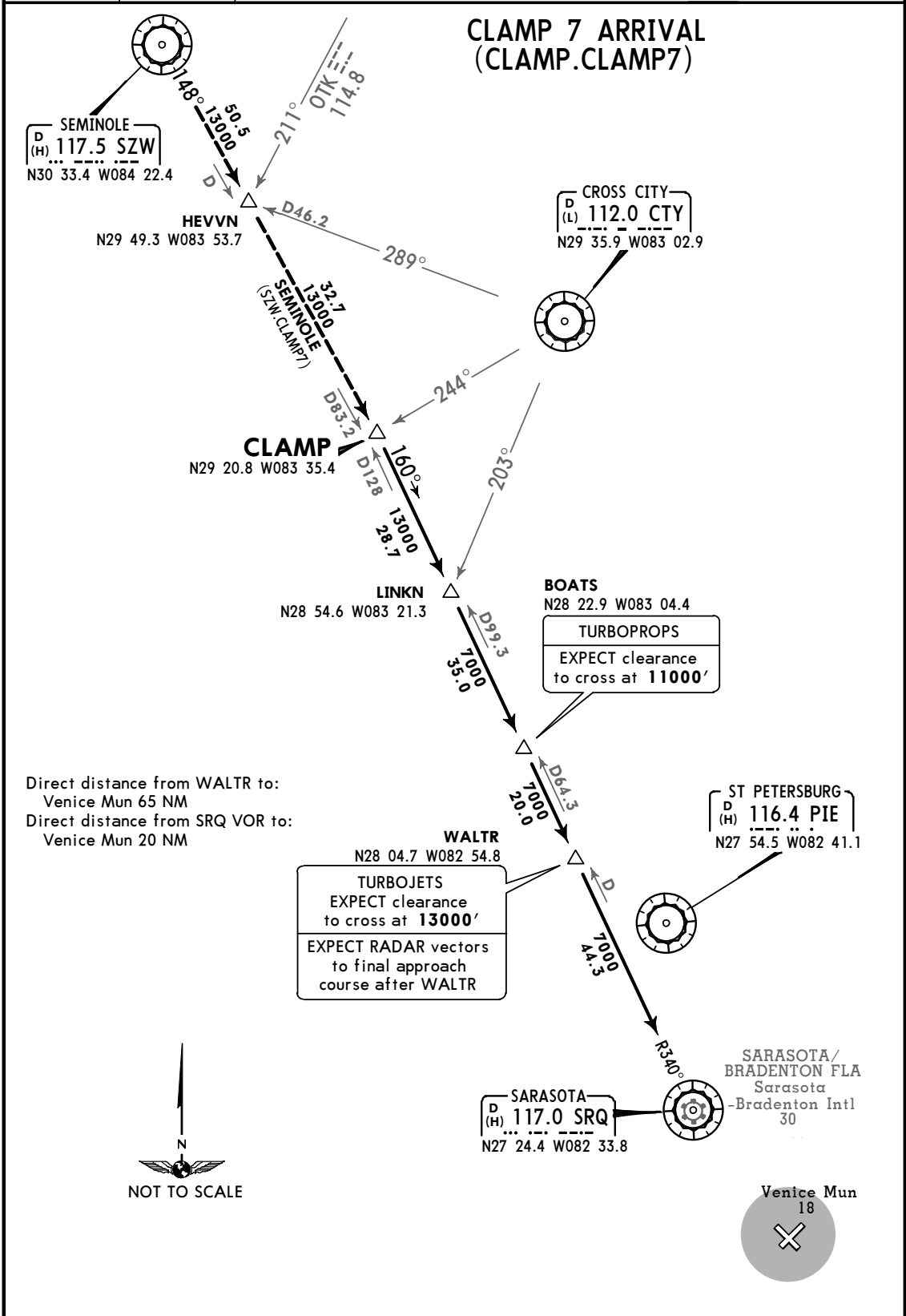


AWOS-3 119.27	Apt Elev See graphic	Alt Set: INCHES Trans level: FL180 Trans alt: 18000' DME required.
-------------------------	----------------------------	---



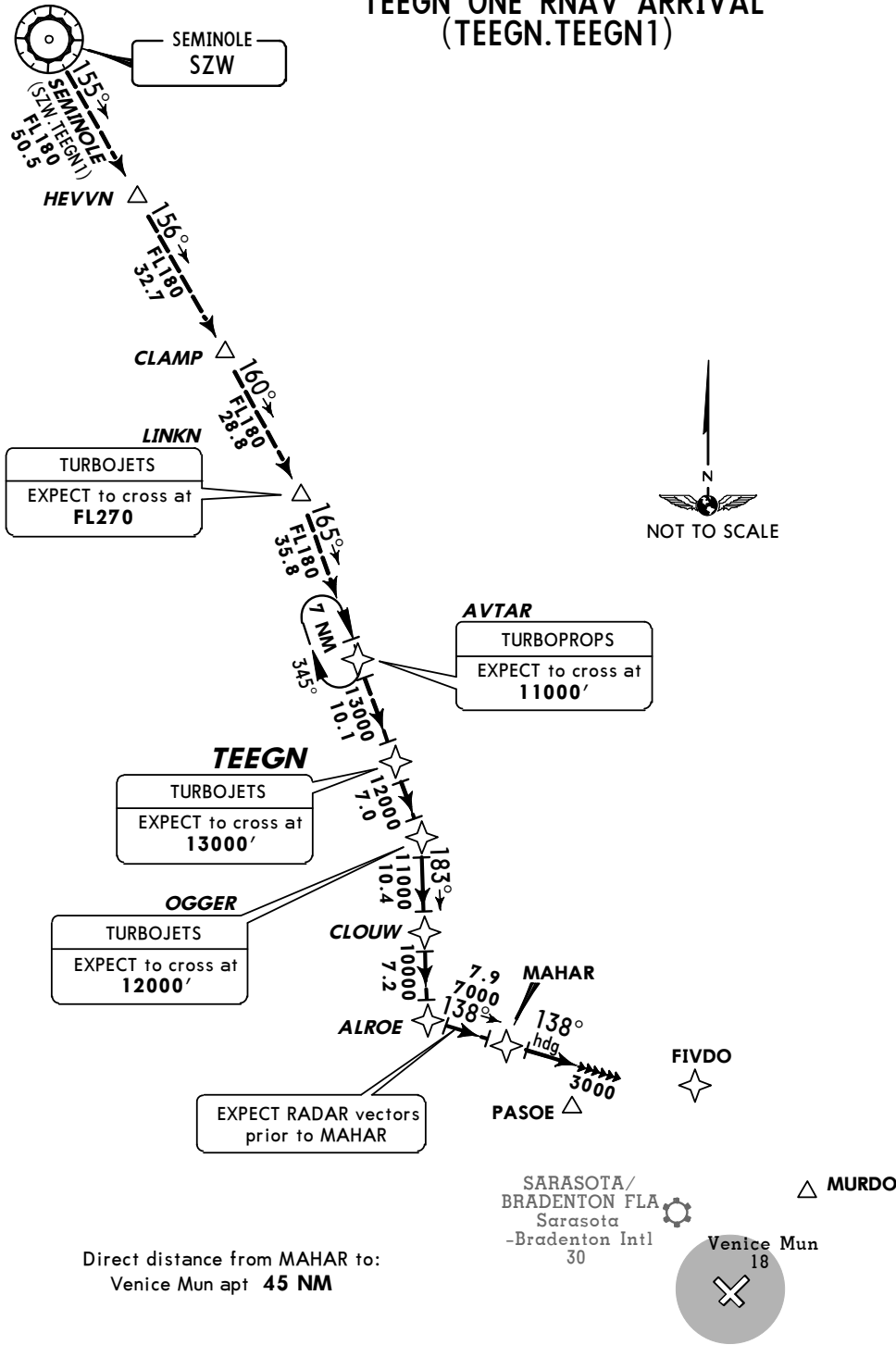
ROUTING

From over CLAMP via SRQ R-340 to SRQ VOR. EXPECT RADAR vectors to final approach course after WALTR.

Apt Elev
See
graphic

Alt Set: INCHES
Trans level: FL180 Trans alt: 18000'
1. DME/DME/IRU or GPS required. 2. RADAR required.
3. Turbojet and turboprop only. 4. RNAV 1.

**TEEGN ONE RNAV ARRIVAL
(TEEGN.TEEGN1)**



ROUTING

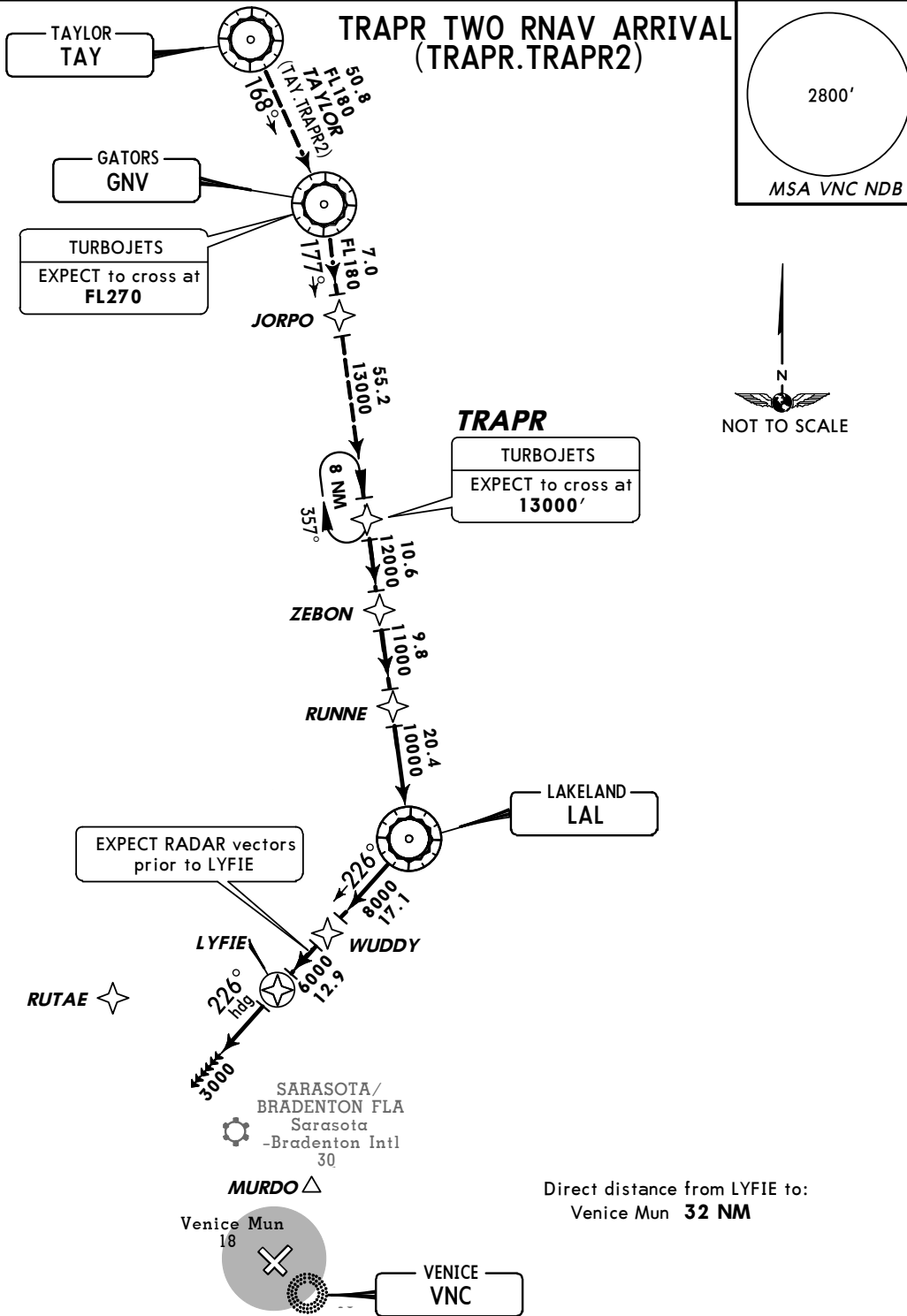
From OGGER on track 183° to CLOUW.

LANDING

From over CLOUW on track 183° to ALROE, then on track 138° to MAHAR, then on heading 138°. EXPECT RADAR vectors.

Apt Elev
See
graphic

Alt Set: INCHES
Trans level: FL180 Trans alt: 18000'
1. DME/DME/IRU or GPS required. 2. RADAR required. 3. RNAV1.
4. Turbojet and turboprop aircraft only.



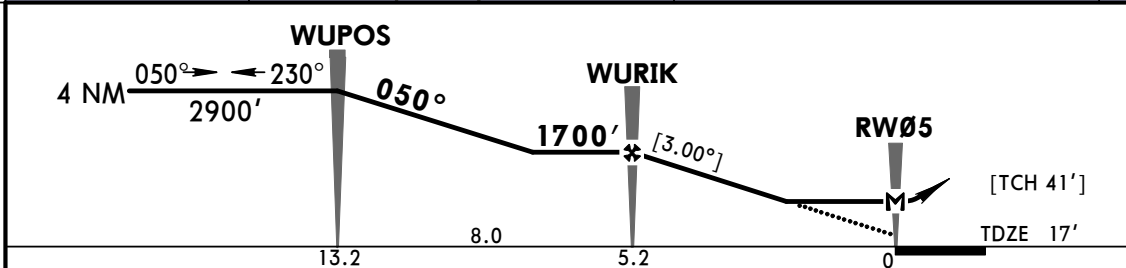
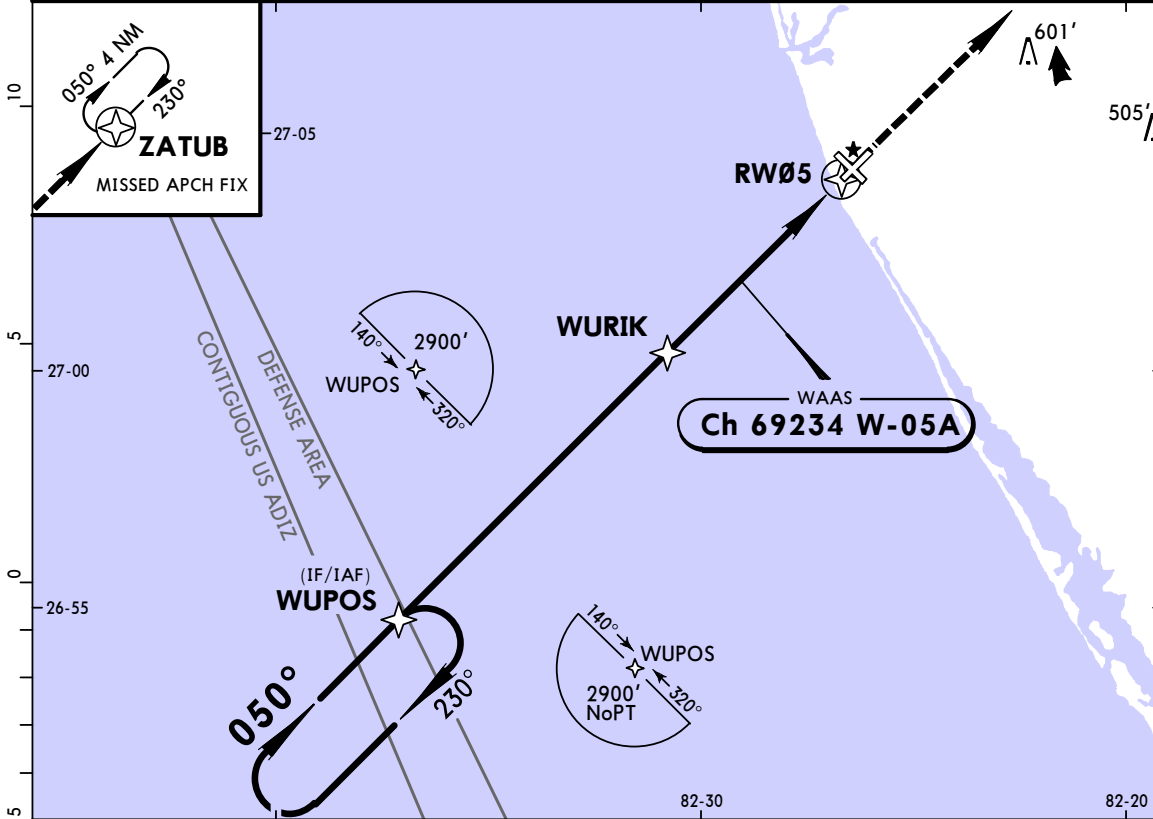
ROUTING

From TRAPR on track 177° to ZEBON, then on track 177° to RUNNE, then on track 177° to LAL.

LANDING

From over LAL on track 226° to WUDDY, then on track 226° to LYFIE, then on heading 226°. EXPECT RADAR vectors.

AWOS-3 119.27		TAMPA Approach 119.65		VENICE MUN UNICOM CTAF 122.72	
WAAS Ch 69234 W-05A	Final Apch Crs 050°	Minimum Alt WURIK 1700' (1683')	LP MDA(H) (CONDITIONAL) 460' (443')	Apt Elev 18'	TDZE 17'
MISSED APCH: Climb to 2900' direct ZATUB and hold.					TAA 30 NM IAF
Alt Set: INCHES Trans level: FL 180 Trans alt: 18000'					
1. Use local altimeter setting; if not received, use Sarasota altimeter setting. 2. DME/DME RNP-0.30 not authorized. 3. Helicopter visibility reduction below 3/4 SM not authorized. 4. Pilot controlled lighting 122.72.					

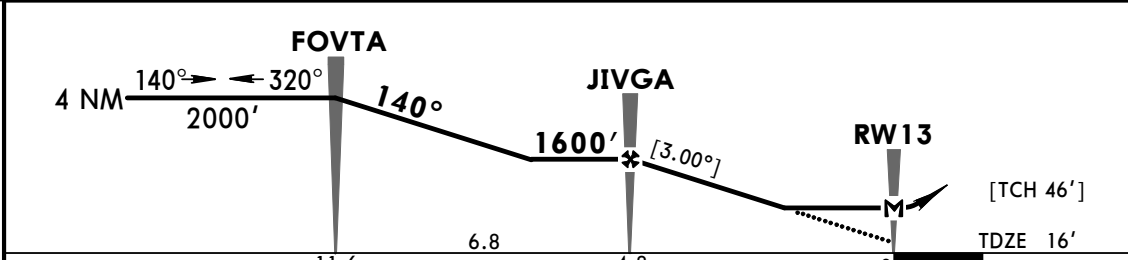
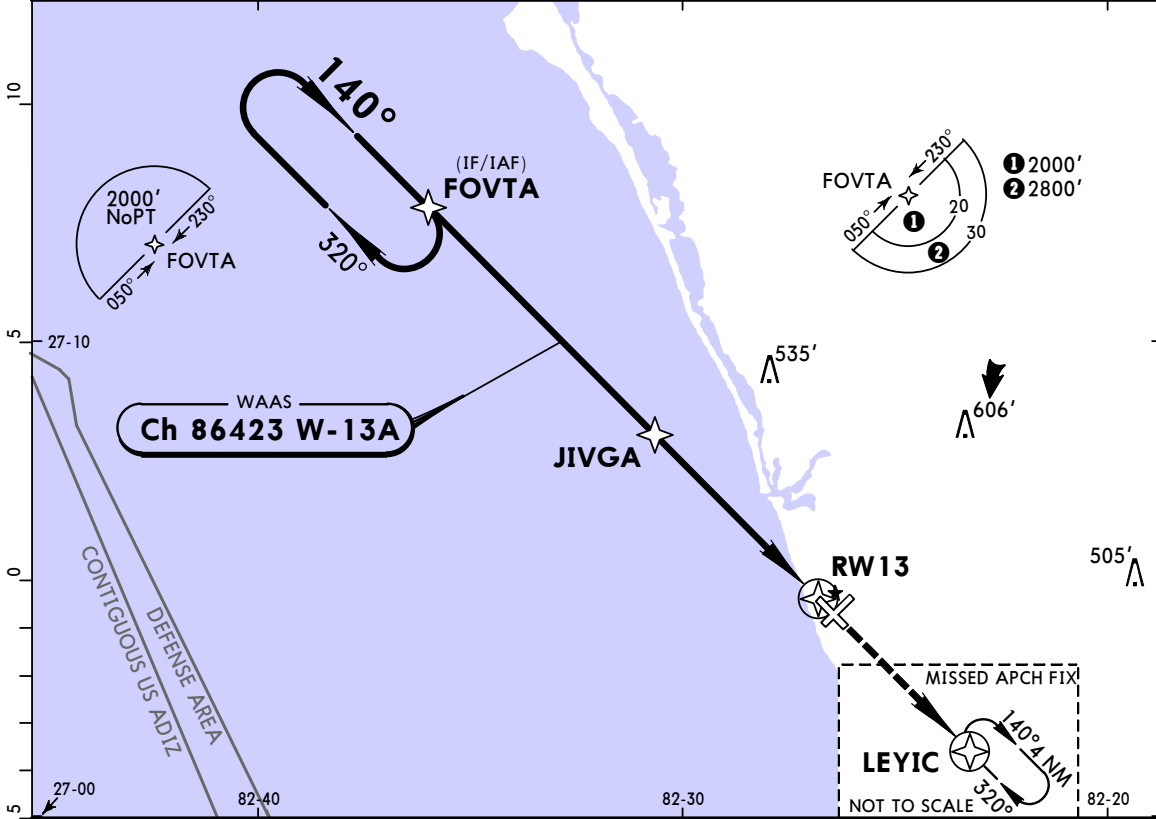


Gnd speed-Kts	70	90	100	120	140	160	REIL PAPI-L	2900'	ZATUB
Descent Angle [3.00°]	372	478	531	637	743	849			
MAP at RW05									

	STRAIGHT-IN LANDING RWY 5				CIRCLE-TO-LAND		
	TERPS	LP	RNAV	RNAV	With Local Altimeter Setting	With Sarasota Altimeter Setting	
	MDA(H) 460' (443')	MDA(H) 520' (503')	MDA(H) 480' (463')	MDA(H) 540' (523')	MDA(H)	MDA(H)	
A	1	1	1	1	90	500' (482') - 1	560' (542') - 1
B	1	1	1	1	120	700' (682') - 2	760' (742') - 2 1/4
C	1 3/8	1 3/8	1 3/8	1 1/2	140	920' (902') - 3	980' (962') - 3
D					165		

TERPS AMEND OC 5 FEB 2015

BRIEFING STRIP™	AWOS-3 119.27		TAMPA Approach 119.65		VENICE MUN UNICOM CTAF 122.72	
	WAAS Ch 86423 W-13A	Final Apch Crs 140°	Minimum Alt JIVGA 1600' (1584')	LP MDA(H) (CONDITIONAL) 460' (444')	Apt Elev 18'	TAA 30 NM IAF
	MISSED APCH: Climb to 2000' direct LEYIC and hold.					
	Alt Set: INCHES Trans level: FL 180 Trans alt: 18000'					
1. Use local altimeter setting; if not received, use Sarasota altimeter setting. 2. DME/DME RNP-0.30 not authorized. 3. Helicopter visibility reduction below 3/4 SM not authorized. 4. Pilot controlled lighting 122.72.						



Gnd speed-Kts	70	90	100	120	140	160	REIL PAPI-L	2000'	D →	LEYIC
Descent Angle [3.00°]	372	478	531	637	743	849				
MAP at RW13										

	STRAIGHT-IN LANDING RWY 13		CIRCLE-TO-LAND	
	1 LP MDA(H) 460' (444') With Local Altimeter Setting	1 LNAV MDA(H) 460' (444') With Local Altimeter Setting	With Local Altimeter Setting	With Sarasota Altimeter Setting
A	1	1	500' (482') - 1	560' (542') - 1
B				
C	1 3/8	1 3/8	700' (682') - 2	760' (742') - 2 1/4
D			920' (902') - 3	980' (962') - 3

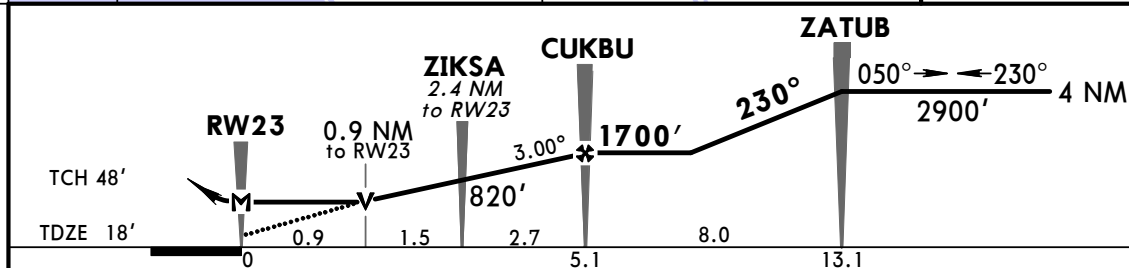
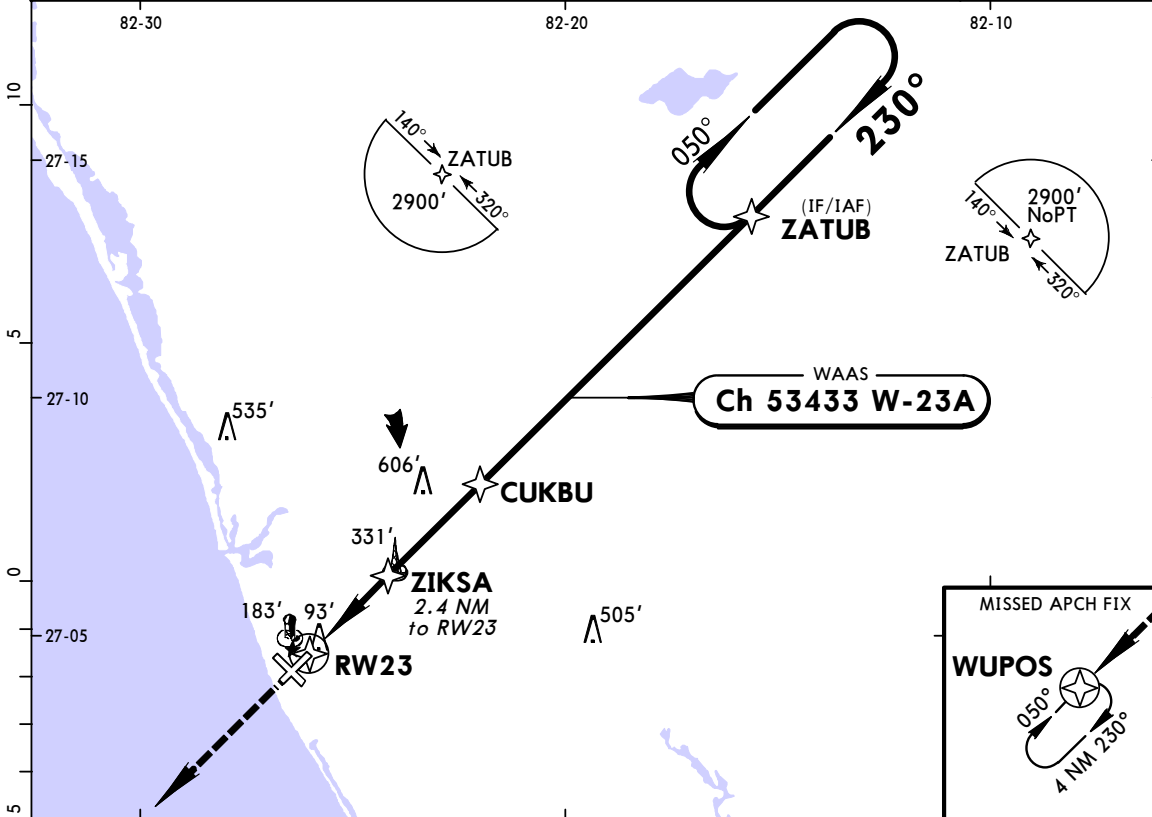
1 MDA(H) 520' (504') with Sarasota altimeter setting.

CHANGES: Minimums.

© JEPPESEN, 2008, 2015. ALL RIGHTS RESERVED.

TERPS AMEND ID 10 DEC 2015

AWOS-3 119.27		TAMPA Approach 119.65		VENICE MUN UNICOM CTAF 122.72	
WAAS Ch 53433 W-23A	Final Apch Crs 230°	Minimum Alt CUKBU 1700' (1682')	LP MDA(H) (CONDITIONAL) 360' (342')	Apt Elev 18'	TAA 30 NM IAF
MISSED APCH: Climb to 2900' direct WUPOS and hold. Alt Set: INCHES Trans level: FL 180 Trans alt: 18000' 1. Use local altimeter setting; if not received, use Sarasota altimeter setting. 2. DME/DME RNP-0.30 not authorized. 3. VDP not authorized with Sarasota altimeter setting. 4. Helicopter visibility reduction below 3/4 SM not authorized. 5. Pilot controlled lighting 122.72.					

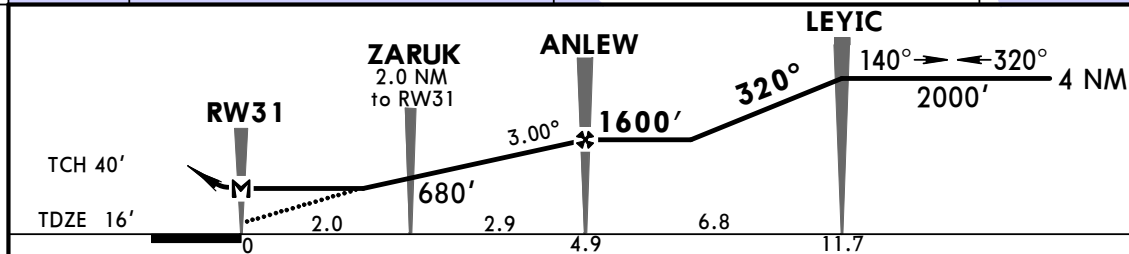


Gnd speed-Kts	70	90	100	120	140	160	REIL PAPI-L	2900'	D → WUPOS
Descent Angle	3.00°	372	478	531	637	743			
MAP at RW23									

	STRAIGHT-IN LANDING RWY 23				CIRCLE-TO-LAND	
	TERPS	LP	RNAV	RNAV	With Local Altimeter Setting	With Sarasota Altimeter Setting
	MDA(H) 360' (342') With Local Altimeter Setting	MDA(H) 420' (402') With Sarasota Altimeter Setting	MDA(H) 440' (422') With Local Altimeter Setting	MDA(H) 500' (482') With Sarasota Altimeter Setting	Max Kts MDA(H)	MDA(H)
A					90	
B		1	1	1	120	500' (482') - 1 560' (542') - 1
C	1				140	700' (682') - 2 760' (742') - 2 1/4
D		1 1/8	1 1/4	1 3/8	165	920' (902') - 3 980' (962') - 3

TERPS AMEND 08 16 OCT 2014

AWOS-3 119.27		TAMPA Approach 119.65		VENICE MUN UNICOM CTAF 122.72	
WAAS Ch 78223 W-31A	Final Apch Crs 320°	Minimum Alt ANLEW 1600' (1584')	LP MDA(H) (CONDITIONAL) 360' (344')	Apt Elev 18'	TAA 30 NM IAF
MISSED APCH: Climb to 2000' direct FOVTA and hold.					
Alt Set: INCHES Trans level: FL 180 Trans alt: 18000' 1. Use local altimeter setting; if not received, use Sarasota altimeter setting. 2. DME/DME RNP-0.30 not authorized. 3. Helicopter visibility reduction below 3/4 SM not authorized. 4. Pilot controlled lighting 122.72.					



Gnd speed-Kts	70	90	100	120	140	160	ODALS PAPI 2000' FOVTA
Descent Angle 3.00°	372	478	531	637	743	849	
MAP at RW31							

	STRAIGHT-IN LANDING RWY 31		CIRCLE-TO-LAND	
	1 LP MDA(H) 360' (344') With Local Altimeter Setting	1 LNAV MDA(H) 360' (344') With Local Altimeter Setting	With Local Altimeter Setting	With Sarasota Altimeter Setting
A			500' (482') -1	560' (542') -1
B				
C	1	1	700' (682') -2	760' (742') -2 1/4
D			920' (902') -3	980' (962') -3

TERPS AMEND ID 10 DEC 2015
1 MDA(H) 420' (404') CAT C & D VIS 1 1/8 with Sarasota altimeter setting.
 CHANGES: Rwy 31 REIL removed. © JEPPESEN, 2008, 2016. ALL RIGHTS RESERVED.