

ADDITIONAL RUNWAY INFORMATION

RWY		USABLE LENGTHS			WIDTH
		Threshold	Landing Beyond Glide Slope	TAKE-OFF	
1 19	1 MIRL 1 REIL PAPI-R (angle 3.50°)				75'

1 Activate on 122.72

TAKE-OFF						FOR FILING AS ALTERNATE		
	Rwy 19		Rwy 1			Authorized Only When Local Weather Available		
	Adequate Vis Ref	STD	With Min climb of 420'/NM to 500'		Other	DAY	NIGHT	
			Adequate Vis Ref	STD		RNAV (GPS) Rwy 1	RNAV (GPS) Rwy 19	
1 & 2 Eng	1/4	1	1/4	1	300-1 1/2	A	800-2	NA
3 & 4 Eng		1/2		1/2		B		
				C				
				D		NA		

KINF

JEPPESEN

INVERNESS, FLA

INVERNESS

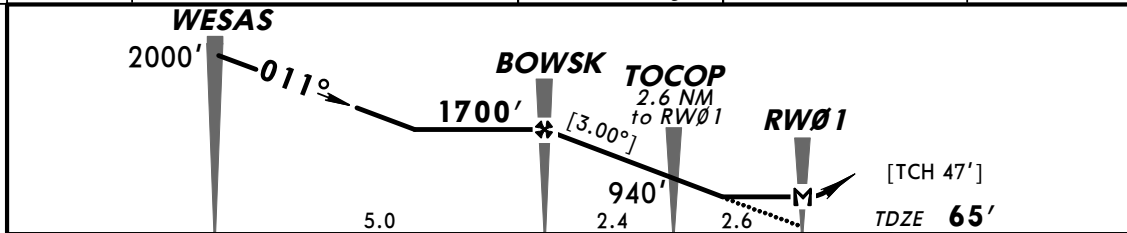
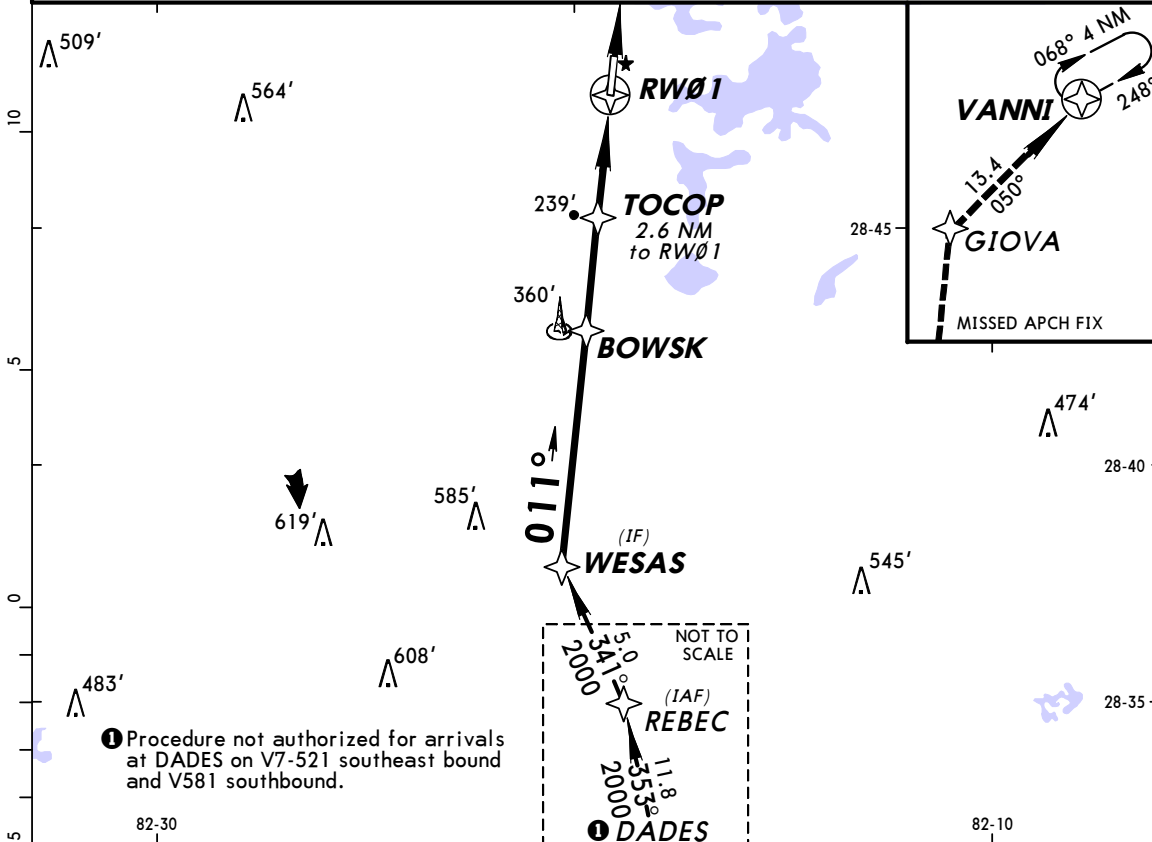
15 AUG 14

(12-1)

CAT A, B & C

RNAV (GPS) Rwy 1

AWOS-3 119.97		JACKSONVILLE Approach 118.6		INVERNESS UNICOM CTAF 122.72	
RNAV	Final Apch Crs 011°	Minimum Alt BOWSK 1700' (1635')	LNAV MDA(H) (CONDITIONAL) 500' (435')	Apt Elev 65'	1800'
MISSED APCH: Climb to 2000' direct GIOVA and on track 050° to VANNI and hold.					
Alt Set: INCHES					MSA RW01
Trans level: FL 180			Trans alt: 18000'		
1. Use local altimeter setting; if not received, use Ocala altimeter setting. 2. Procedure not authorized at night. 3. DME/DME RNP-0.30 not authorized. 4. Visibility reduction by helicopters not authorized. 5. VGSI and descent angles not coincident. 6. Pilot controlled lighting 122.72.					



Gnd speed-Kts	70	90	100	120	140	160	REIL	2000'	GIOVA
Descent Angle	[3.00°]	372	478	531	637	849	PAPI-R		
MAP at RW01									

	STRAIGHT-IN LANDING RWY 1 With Local Altimeter Setting		CIRCLE-TO-LAND With Local Altimeter Setting	
	DAY	NIGHT	DAY	NIGHT
	LNAV MDA(H) 500' (435')		LNAV MDA(H)	
A	1	NA	90	660'(595')-1
B	1		120	660'(595')-1 1/2
C	1 1/4		140	
D	NA		D	NA
	LNAV MDA(H) 560' (495')		LNAV MDA(H)	
A	1	NA	90	720'(655')-1
B	1		120	720'(655')-1 3/4
C	1 3/8		140	
D	NA		D	NA

CHANGES: TDZE, profile note.

© JEPPESEN, 2012, 2014. ALL RIGHTS RESERVED.

TERPS AMEND 0A 21 AUG 2014

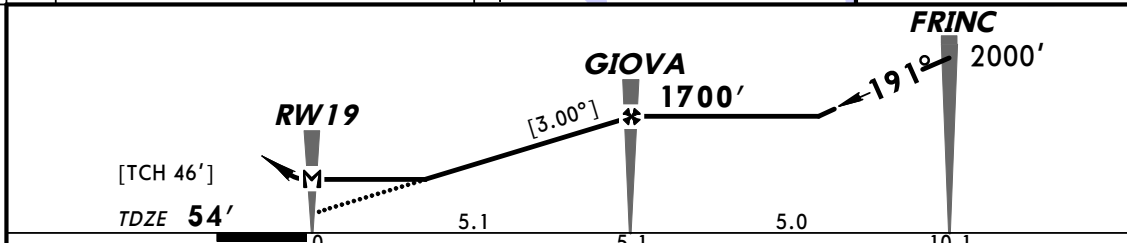
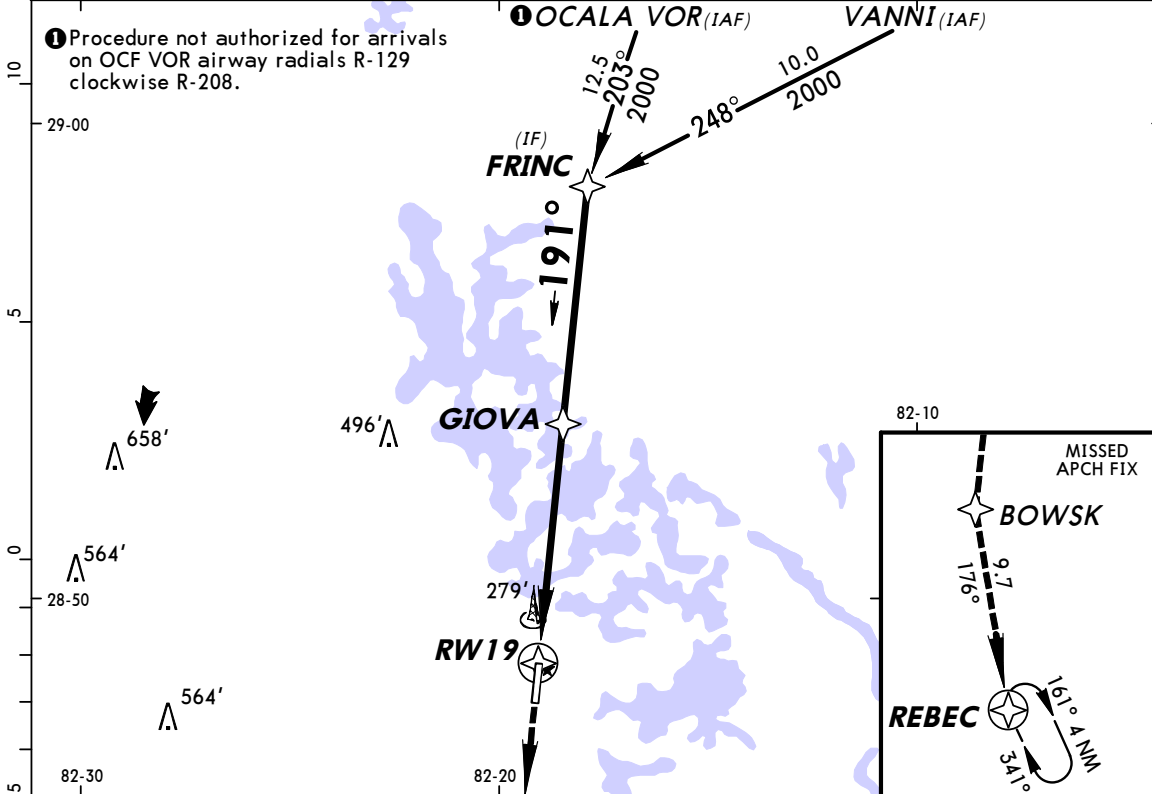
KINF
INVERNESS

JEPPESEN

INVERNESS, FLA

15 AUG 14 (12-2) CAT A, B & C **RNAV (GPS) Rwy 19**

AWOS-3 119.97		JACKSONVILLE Approach 118.6		INVERNESS UNICOM CTAF 122.72	
RNAV	Final Apch Crs 191°	Minimum Alt GIOVA 1700' (1646')	LNAV MDA(H) (CONDITIONAL) 580' (526')	Apt Elev 65'	1800' MSA RW19
MISSED APCH: Climb to 2000' direct BOWSK and on track 176° to REBEC and hold.					
Alt Set: INCHES Trans level: FL 180 Trans alt: 18000' 1. Use local altimeter setting; if not received, use Ocala altimeter setting. 2. Procedure not authorized at night. 3. DME/DME RNP-0.30 not authorized. 4 Visibility reduction by helicopters not authorized. 5. VGSI and descent angles not coincident. 6. Pilot controlled lighting 122.72.					



Gnd speed-Kts	70	90	100	120	140	160	REIL PAPI-R	2000'	D	BOWSK
Descent Angle [3.00°]	372	478	531	637	743	849				
MAP at RW19										

	STRAIGHT-IN LANDING RWY 19 With Local Altimeter Setting		CIRCLE-TO-LAND With Local Altimeter Setting	
	DAY	NIGHT	DAY	NIGHT
A	LNAV MDA(H) 580' (526')		Max Kts	
B	1		90	660' (595')-1
C	1½	NA	120	660' (595')-1½
D	NA		140	660' (595')-1¾
			D	NA
	With Ocala Altimeter Setting		With Ocala Altimeter Setting	
A	LNAV MDA(H) 640' (586')		Max Kts	
B	1		90	720' (655')-1
C	1¾	NA	120	720' (655')-1¾
D	NA		140	720' (655')-2¼
			D	NA

CHANGES: TDZE, profile note.

© JEPPESEN, 2012, 2014. ALL RIGHTS RESERVED.

TERPS AMEND 0A 21 AUG 2014