

ADDITIONAL RUNWAY INFORMATION

RWY	USABLE LENGTHS			
	LANDING	BEYOND	TAKE-OFF	WIDTH
	Threshold	Glide Slope		
9	① MIRL ① REIL PAPI-L (angle 3.0°)			75'
27	① MIRL ① REIL PAPI-R (angle 3.0°)			
18		2473'		100'
36		1845'		

① Activate on 122.72.

TAKE-OFF & OBSTACLE DEPARTURE PROCEDURE

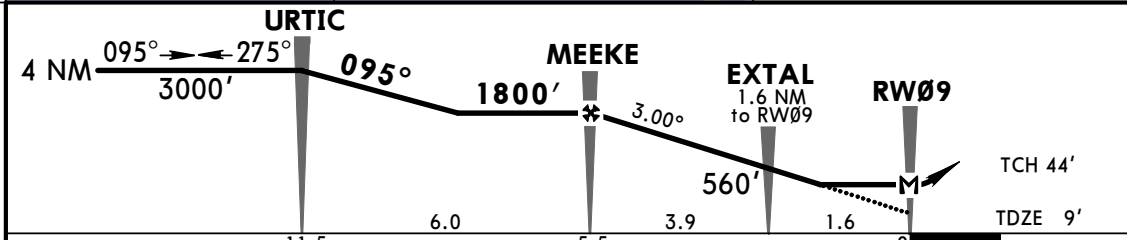
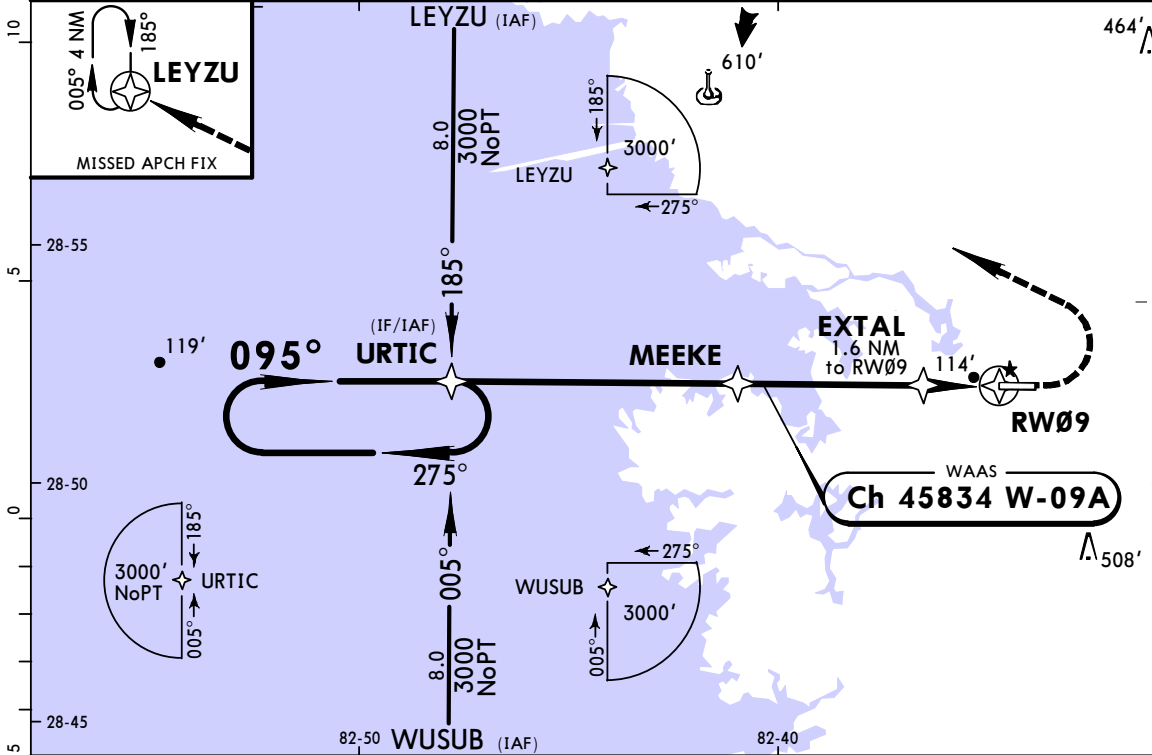
	Rwy 27		Rwy 9			Rwys 18, 36	
	Adequate Vis Ref	STD	With Min climb of 260'/NM to 600'		For Climb In Visual Conditions		
			Adequate Vis Ref	STD			
1 & 2 Eng	1/4	1	1/4	1	500-2 3/4	900-2 1/2	NA
3 & 4 Eng		1/2	1/4	1/2			

OBSTACLE DP: Rwy 9: Climb heading 096° to 700' before turning right, or for climb in visual conditions cross Crystal River Airport at or above 800' before proceeding on course.

FOR FILING AS ALTERNATE

A	Authorized Only When Local Weather Available		NIGHT RNAV (GPS) Rwy 9 RNAV (GPS) Rwy 27
	DAY RNAV (GPS) Rwy 9 RNAV (GPS) Rwy 27		
A	800-2		NA
B			
C	800-2 1/4		
D	900-2 3/4		

AWOS-3 118.32		JACKSONVILLE Approach (R) 118.6		CRYSTAL RIVER UNICOM CTAF 122.72	
WAAS Ch 45834 W-09A	Final Apch Crs 095°	Minimum Alt MEEKE 1800' (1791')	LP MDA(H) (CONDITIONAL) 380' (371')	Apt Elev 9'	TAA 30 NM IAF
MISSED APCH: Climb to 500' then climbing LEFT turn to 3000' direct LEYZU and hold.					
Alt Set: INCHES Trans level: FL 180 Trans alt: 18000' 1. Procedure not authorized at night. 2. Use local altimeter setting; if not received, use Ocala altimeter setting. 3. DME/DME RNP-0.30 not authorized. 4. Helicopter visibility reduction below 1 SM not authorized. 5. Pilot controlled lighting 122.72.					

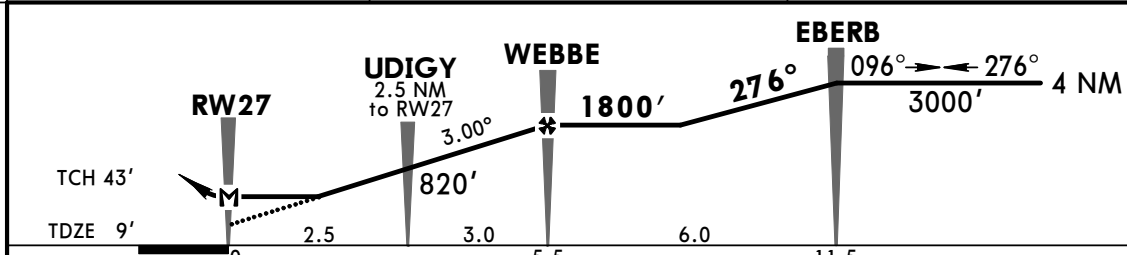
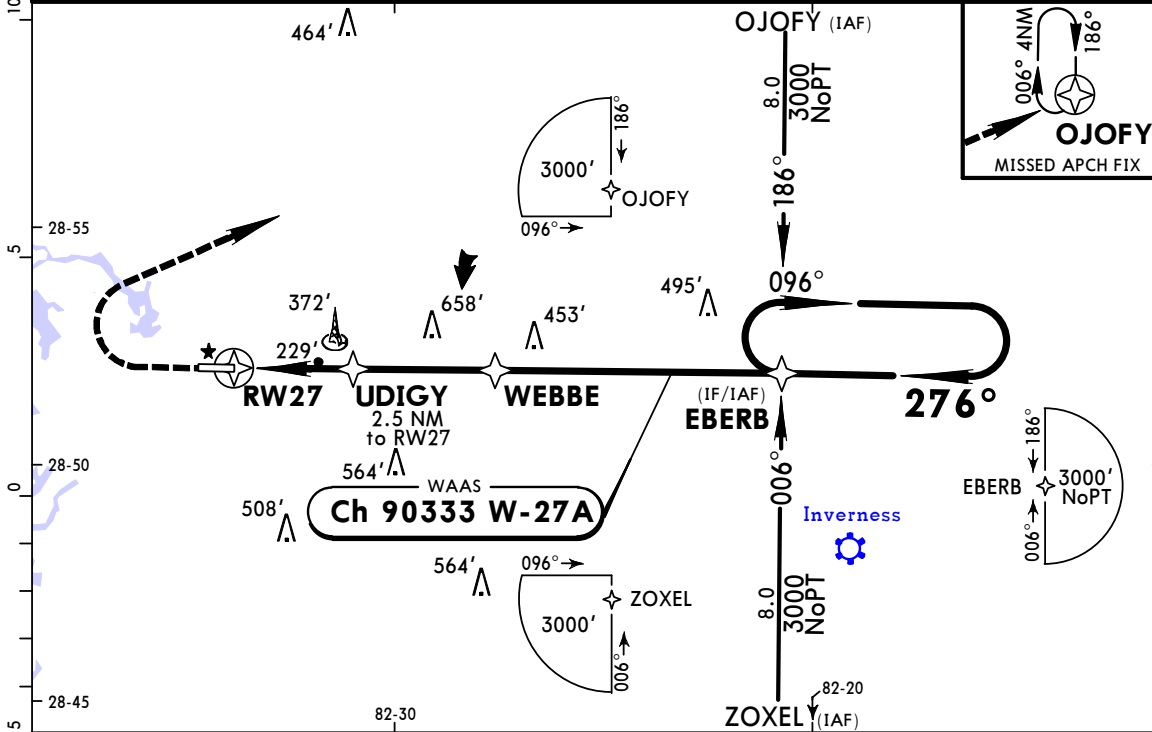


Gnd speed-Kts	70	90	100	120	140	160	REIL PAPI-L	500'	3000'	D	LEYZU
Descent Angle	3.00°	372	478	531	637	849					
MAP at RW09											

TERPS		STRAIGHT-IN LANDING With Local Altimeter Setting		CIRCLE-TO-LAND With Local Altimeter Setting	
		LP MDA(H) 380' (371')	LNAV MDA(H) 420' (411')	Max Kts MDA(H)	
A			1	90	460' (451') -1
B	1			120	540' (531') -1
C			1 1/8	140	760' (751') -2 1/4
D				165	880' (871') -2 3/4
		With Ocala Altimeter Setting		Max Kts MDA(H)	
		LP MDA(H) 460' (451')	LNAV MDA(H) 500' (491')	With Ocala Altimeter Setting	
A			1	90	540' (531') -1
B	1			120	620' (611') -1
C			1 3/8	140	840' (831') -2 1/2
D				165	960' (951') -3

TERPS - AMEND 1C - 26 MAY 2016

AWOS-3 118.32		JACKSONVILLE Approach (R) 118.6		CRYSTAL RIVER UNICOM CTAF 122.72	
WAAS Ch 90333 W-27A	Final Apch Crs 276°	Minimum Alt WEBBE 1800' (1791')	LP MDA(H) (CONDITIONAL) 480' (471')	Apt Elev 9'	
MISSED APCH: Climb 700' then climbing RIGHT turn to 3000' direct OJOFY and hold.					TAA 30 NM IAF
Alt Set: INCHES Trans level: FL 180 Trans alt: 18000'					
1. Procedure not authorized at night. 2. Use local altimeter setting; if not received, use Ocala altimeter setting. 3. DME/DME RNP-0.30 not authorized. 4. Helicopter visibility reduction below 1 SM not authorized. 5. Pilot controlled lighting 122.72.					



Gnd speed-Kts	70	90	100	120	140	160	REIL	700'	3000'	OJOFY
Descent Angle	3.00°	372	478	531	637	743	PAPI-R	↑	RT	→
MAP at RW27										

TERPS		STRAIGHT-IN LANDING With Local Altimeter Setting		CIRCLE-TO-LAND With Local Altimeter Setting	
	LP MDA(H) 480' (471')	LNAV MDA(H) 640' (631')		Max Kts	MDA(H)
A	1	1		90	640' (631') - 1
B				120	
C	1 3/8	1 3/4		140	760' (751') - 2 1/4
D				165	880' (871') - 2 3/4
		With Ocala Altimeter Setting		With Ocala Altimeter Setting	
	LP MDA(H) 560' (551')	LNAV MDA(H) 720' (711')		Max Kts	MDA(H)
A	1	1		90	720' (711') - 1
B				120	
C	1 5/8	2		140	840' (831') - 2 1/2
D				165	960' (951') - 3