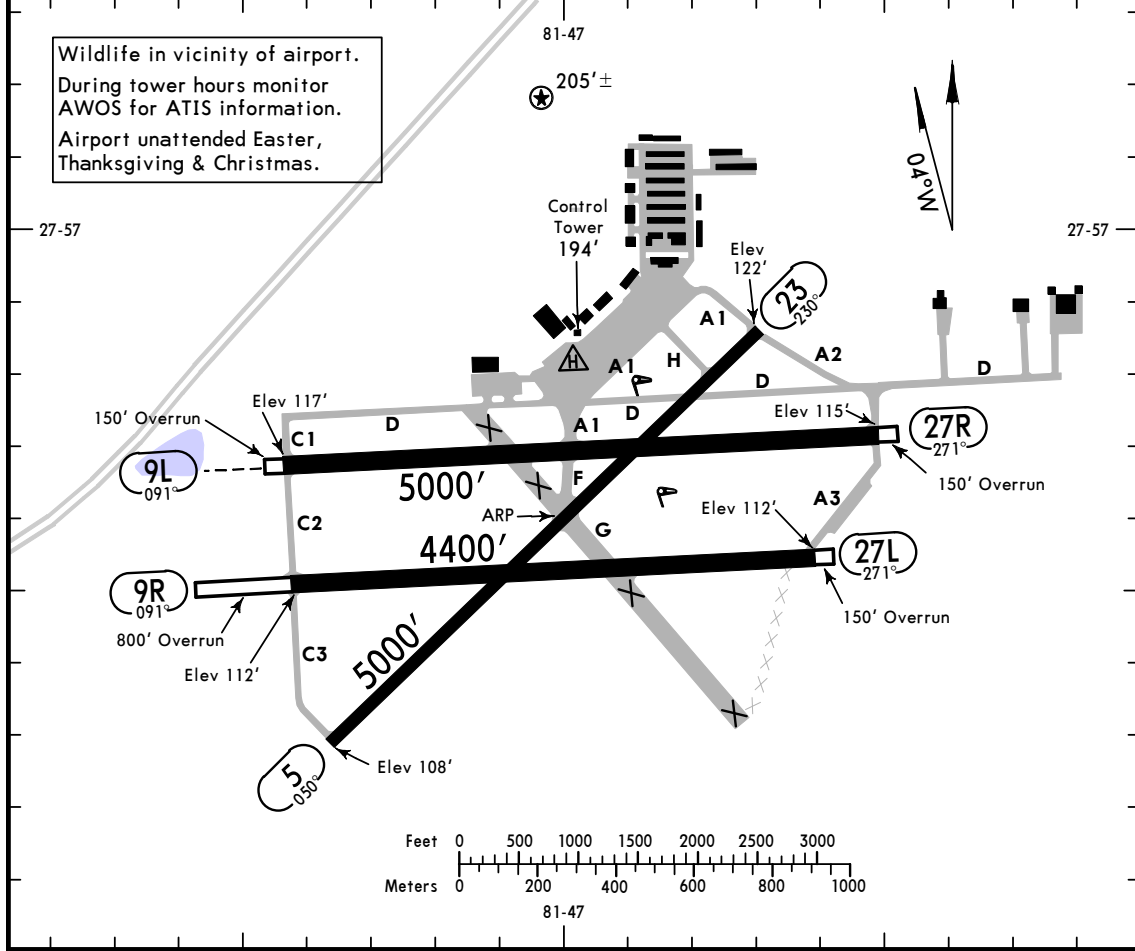


AWOS-3 123.77	*BARTOW Ground 121.9	*Tower CTAF 121.2	UNICOM 122.95	TAMPA Departure (R) 120.65
-------------------------	--------------------------------	-----------------------------	----------------------	--------------------------------------

Wildlife in vicinity of airport.
 During tower hours monitor
 AWOS for ATIS information.
 Airport unattended Easter,
 Thanksgiving & Christmas.



ADDITIONAL RUNWAY INFORMATION

RWY		USABLE LENGTHS			WIDTH
		LANDING BEYOND Threshold	Glide Slope	TAKE-OFF	
5	① MIRL ① REIL ① PAPI-L (angle 3.5°)				100'
9R					150'
9L	① MIRL ① REIL ① PAPI-L (angle 3.0°)				150'

① Activate on 121.2 when Twr inop.

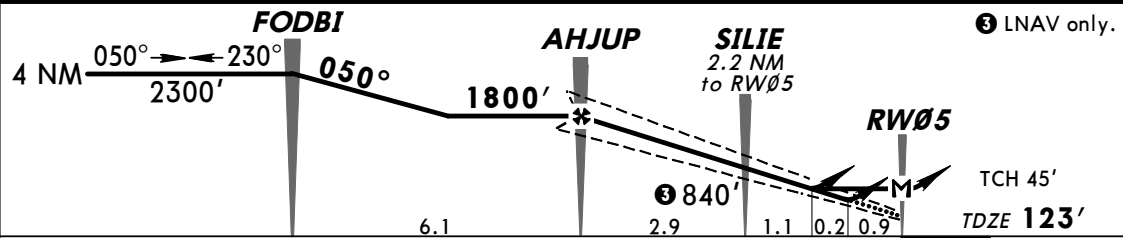
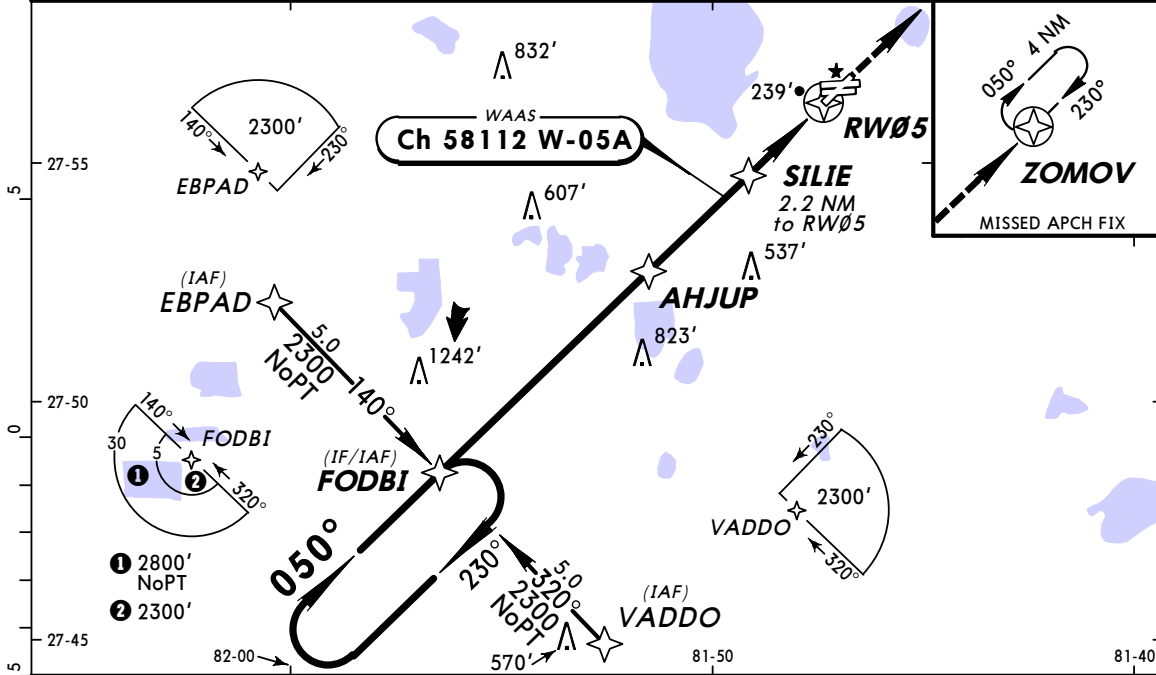
TAKE-OFF		FOR FILING AS ALTERNATE		
All Rwys		Authorized Only When Local Weather Available		
	Adequate Vis Ref	STD	Other	
1 & 2 Eng	1/4	1	800-2	
3 & 4 Eng		1/2		
				NA

BRIEFING STRIP™

AWOS-3 123.77	TAMPA Approach (R) 120.65	*BARTOW Tower CTAF 121.2	*Ground 121.9
WAAS Ch 58112 W-05A	Final Apch Crs 050°	Minimum Alt AHJUP 1800' (1677')	LPV DA(H) (CONDITIONAL) 447' (324')
Apt Elev 125' TDZE 123'			TAA 30 NM IAF

MISSED APCH: Climb to 2300' direct ZOMOV and hold.

Alt Set: INCHES Trans level: FL 180 Trans alt: 18000'
 1. Use local altimeter setting; if not received, use Tampa Intl altimeter setting. 2. Baro-VNAV not authorized when using Tampa Intl altimeter setting. 3. For uncompensated Baro-VNAV systems, LNAV/VNAV not authorized below -15°C (5°F) or above 48°C (118°F). 4. DME/DME RNP-0.30 not authorized. 5. Visibility reduction by helicopters not authorized. 6. VGSI and RNAV glidepath not coincident. 7. Pilot controlled lighting 121.2.



Gnd speed-Kts	70	90	100	120	140	160	REIL	2300'	ZOMOV
Glide Path Angle 3.00°	372	478	531	637	743	849	PAPI-L	↑	
MAP at RW05									

STRAIGHT-IN LANDING RWY 5 With Local Altimeter Setting			CIRCLE-TO-LAND With Local Altimeter Setting	
LPV DA(H) 447' (324')	LNAV/VNAV DA(H) 509' (386')	LNAV MDA(H) 520' (397')	Max Kts	MDA(H)
A			90	600' (475') - 1
B			120	
C	1/4	1/2	140	600' (475') - 1 1/2
D		1/4	165	680' (555') - 2
With Tampa Intl Altimeter Setting			With Tampa Intl Altimeter Setting	
DA(H) 533' (410')	DA(H) 684' (561')	MDA(H) 640' (517')	Max Kts	MDA(H)
A			90	720' (595') - 1
B			120	
C	1/2	2	140	720' (595') - 1 1/2
D		1 3/4	165	800' (675') - 2 1/4

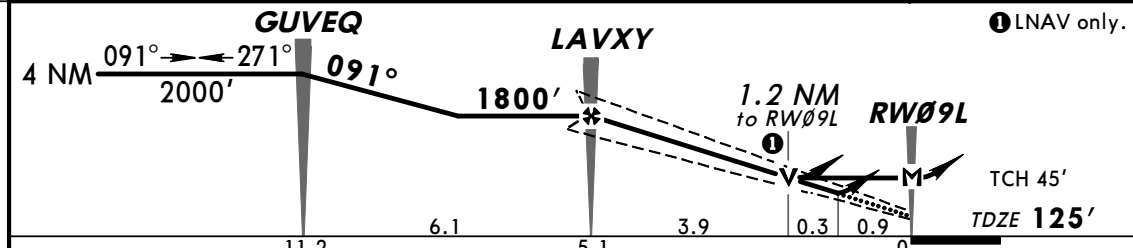
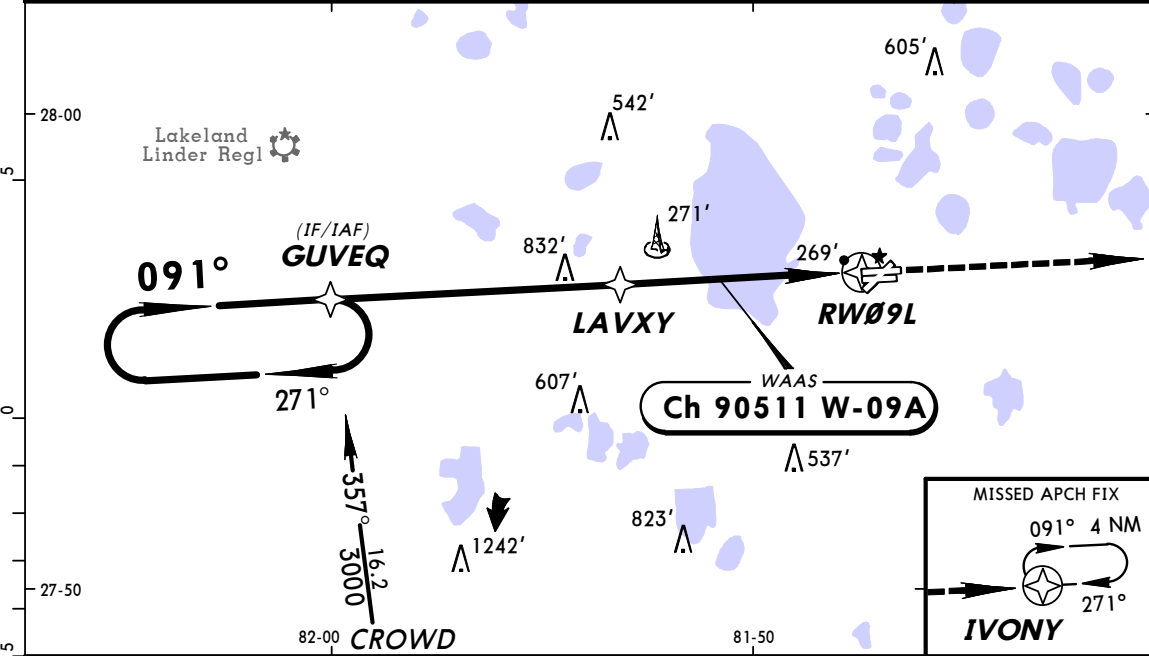
TERPS AMEND OB 14 JAN 2010

KBOW/BOW
BARTOW MUN

JEPPESEN
8 JAN 10 (12-2)

BARTOW, FLA
RNAV (GPS) Rwy 9L

AWOS-3 123.77		TAMPA Approach (R) 120.65		*BARTOW Tower CTAF 121.2		*Ground 121.9	
WAAS Ch 90511 W-09A		Final Apch Crs 091°		Minimum Alt LAVXY 1800' (1675')		LPV DA(H) (CONDITIONAL) 442' (317')	
				Apt Elev 125'		TDZE 125'	
MISSED APCH: Climb to 2000' direct IVONY and hold.							2700' MSA RW09L
Alt Set: INCHES Trans level: FL 180 Trans alt: 18000'							
1. Use local altimeter setting; if not received, use Tampa Intl altimeter setting. 2. Baro-VNAV and VDP not authorized when using Tampa Intl altimeter setting. 3. For uncompensated Baro-VNAV systems, LNAV/VNAV not authorized below -15°C (5°F) or above 48°C (118°F). 4. DME/DME RNP-0.30 not authorized. 5. Visibility reduction by helicopters not authorized. 6. Pilot controlled lighting 121.2.							



Gnd speed-Kts	70	90	100	120	140	160	REIL	2000'	D → IVONY
Glide Path Angle 3.00°	372	478	531	637	743	849	PAPI-L	↑	
MAP at RW09L									

STRAIGHT-IN LANDING RWY 9L						CIRCLE-TO-LAND		
With Local Altimeter Setting						With Local Altimeter Setting		
	LPV	LNAV/VNAV		LNAV		Max Kts	MDA(H)	
	DA(H)	DA(H)	DA(H)	MDA(H)	MDA(H)			
A	442' (317')	539' (414')		540' (415')		90	600' (475') - 1	
B	1¼	1½		1		120	600' (475') - 1	
C				1¼		140	600' (475') - 1½	
D						165	680' (555') - 2	
With Tampa Intl Altimeter Setting						With Tampa Intl Altimeter Setting		
	DA(H)	DA(H)	DA(H)	MDA(H)	MDA(H)	Max Kts		
A	548' (423')	645' (520')		660' (535')		90	720' (595') - 1	
B	1½	1¾		1		120	720' (595') - 1	
C				1½		140	720' (595') - 1½	
D				1¾		165	800' (675') - 2¼	

TERPS AMEND 1B 14 JAN 2010

CHANGES: Circling minimums.

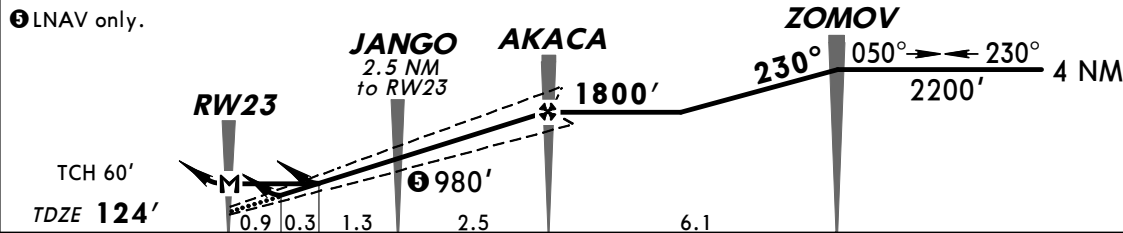
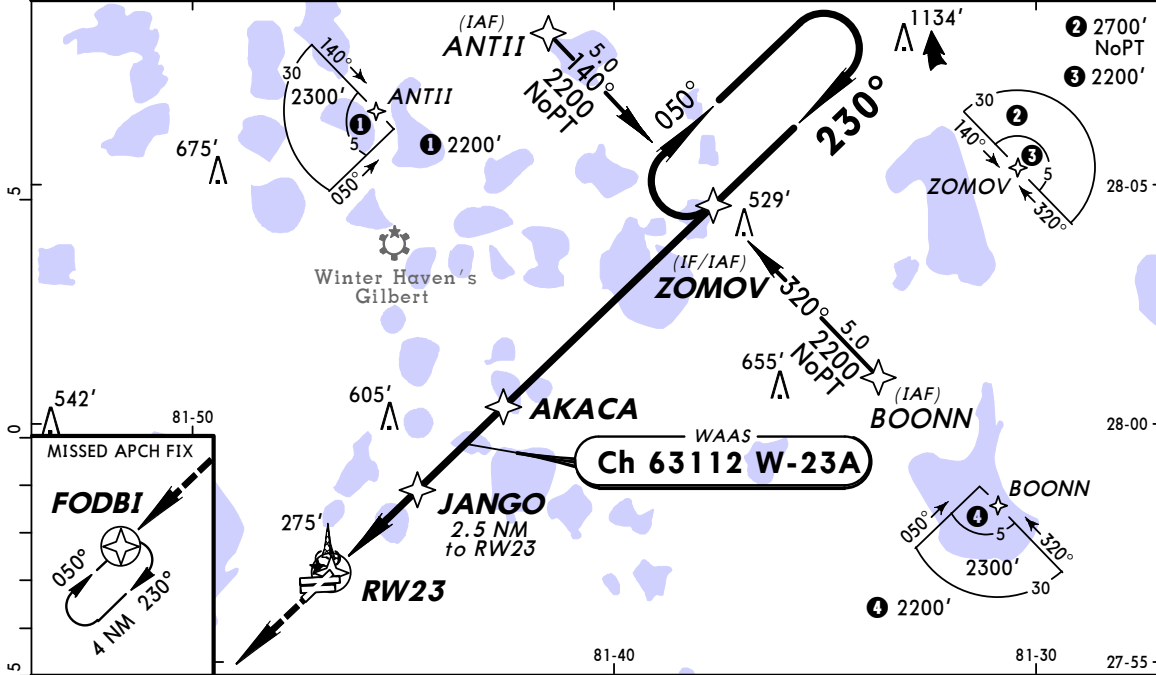
© JEPPESEN, 2002, 2010. ALL RIGHTS RESERVED.

BRIEFING STRIP™

AWOS-3 123.77	TAMPA Approach (R) 120.65	*BARTOW Tower CTAF 121.2	*Ground 121.9
WAAS Ch 63112 W-23A	Final Apch Crs 230°	Minimum Alt AKACA 1800' (1676')	LPV DA(H) (CONDITIONAL) 454' (330')
Apt Elev 125' TDZE 124'			TAA 30 NM IAF

MISSED APCH: Climb to 2300' direct FODBI and hold.

Alt Set: INCHES Trans level: FL 180 Trans alt: 18000'
 1. Use local altimeter setting; if not received, use Tampa Intl altimeter setting. 2. Baro-VNAV not authorized when using Tampa Intl altimeter setting. 3. For uncompensated Baro-VNAV systems, LNAV/VNAV not authorized below -15°C (5°F) or above 48°C (118°F). 4. DME/DME RNP-0.30 not authorized. 5. Visibility reduction by helicopters not authorized. 6. VGSI and RNAV glidepath not coincident. 7. Pilot controlled lighting 121.2.



Gnd speed-Kts	70	90	100	120	140	160				
Glide Path Angle 3.00°	372	478	531	637	743	849				
MAP at RW23										

STRAIGHT-IN LANDING RWY 23 With Local Altimeter Setting						CIRCLE-TO-LAND With Local Altimeter Setting	
	LPV DA(H) 454' (330')	LNAV/VNAV DA(H) 575' (451')	LNAV MDA(H) 580' (456')	Max Kts	MDA(H)		
A				90	600'(475') - 1		
B	1	1½	1	120	600'(475') - 1½		
C			1¼	140	600'(475') - 1½		
D			1½	165	680'(555') - 2		
With Tampa Intl Altimeter Setting						With Tampa Intl Altimeter Setting	
	DA(H) 560' (436')	DA(H) 681' (557')	MDA(H) 700' (576')	Max Kts	MDA(H)		
A				90	720'(595') - 1		
B	1½	2	1	120	720'(595') - 1		
C			1½	140	720'(595') - 1½		
D			1¾	165	800'(675') - 2¼		

CHANGES: Circling minimums.

© JEPPESEN, 2009, 2010. ALL RIGHTS RESERVED.

TERPS AMEND 0B 14 JAN 2010

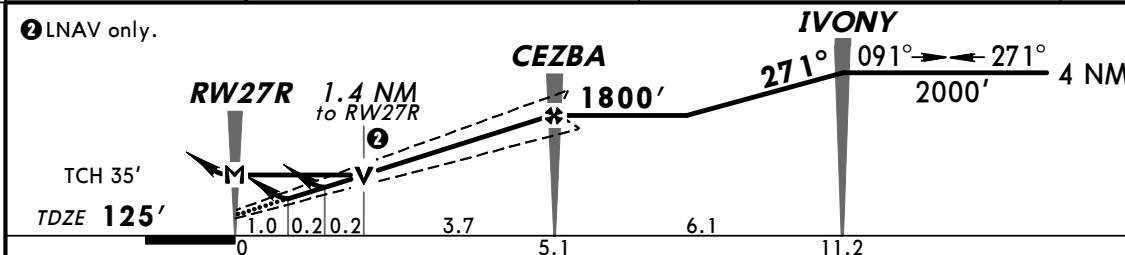
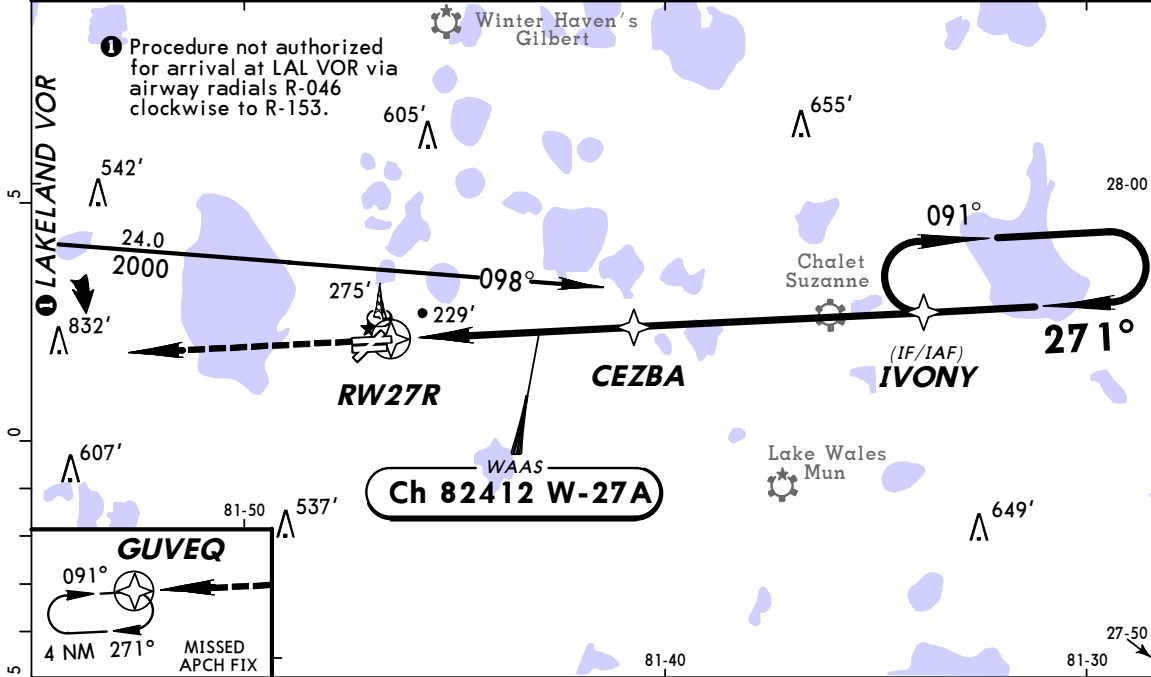
KBOW/BOW
BARTOW MUN

JEPPESEN
8 JAN 10 (12-4)

BARTOW, FLA
RNAV (GPS) Rwy 27R

BRIEFING STRIP™

AWOS-3 123.77		TAMPA Approach (R) 120.65		*BARTOW Tower CTAF 121.2		*Ground 121.9	
WAAS Ch 82412 W-27A		Final Apch Crs 271°		Minimum Alt CEZBA 1800' (1675')		LPV DA(H) (CONDITIONAL) 470' (345')	
				Apt Elev 125'		TDZE 125'	
MISSED APCH: Climb to 2000' direct GUYEQ and hold.							<p>2700'</p> <p>MSA RW27R</p>
Alt Set: INCHES Trans level: FL 180 Trans alt: 18000'							
1. Use local altimeter setting; if not received, use Tampa Intl altimeter setting. 2. Baro-VNAV and VDP not authorized when using Tampa Intl altimeter setting. 3. For uncompensated Baro-VNAV systems, LNAV/VNAV not authorized below -15°C (5°F) or above 48°C (118°F). 4. DME/DME RNP-0.30 not authorized. 5. Visibility reduction by helicopters not authorized. 6. Pilot controlled lighting 121.2.							



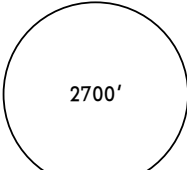
Gnd speed-Kts	70	90	100	120	140	160				
Glide Path Angle 3.00°	372	478	531	637	743	849		REIL	2000'	
								PAPI-L	↑	
MAP at RW27R									→	GUYEQ

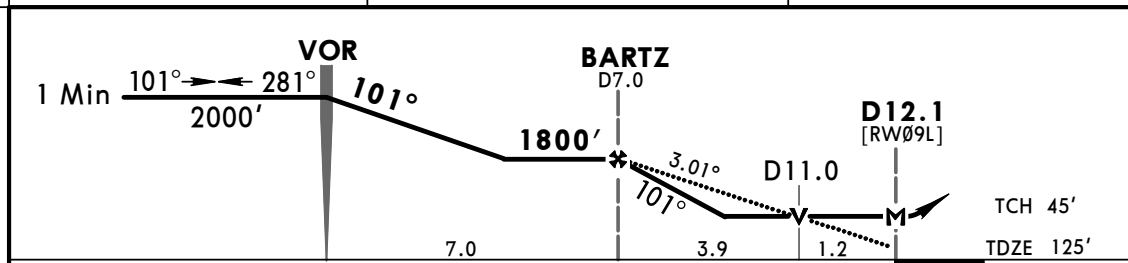
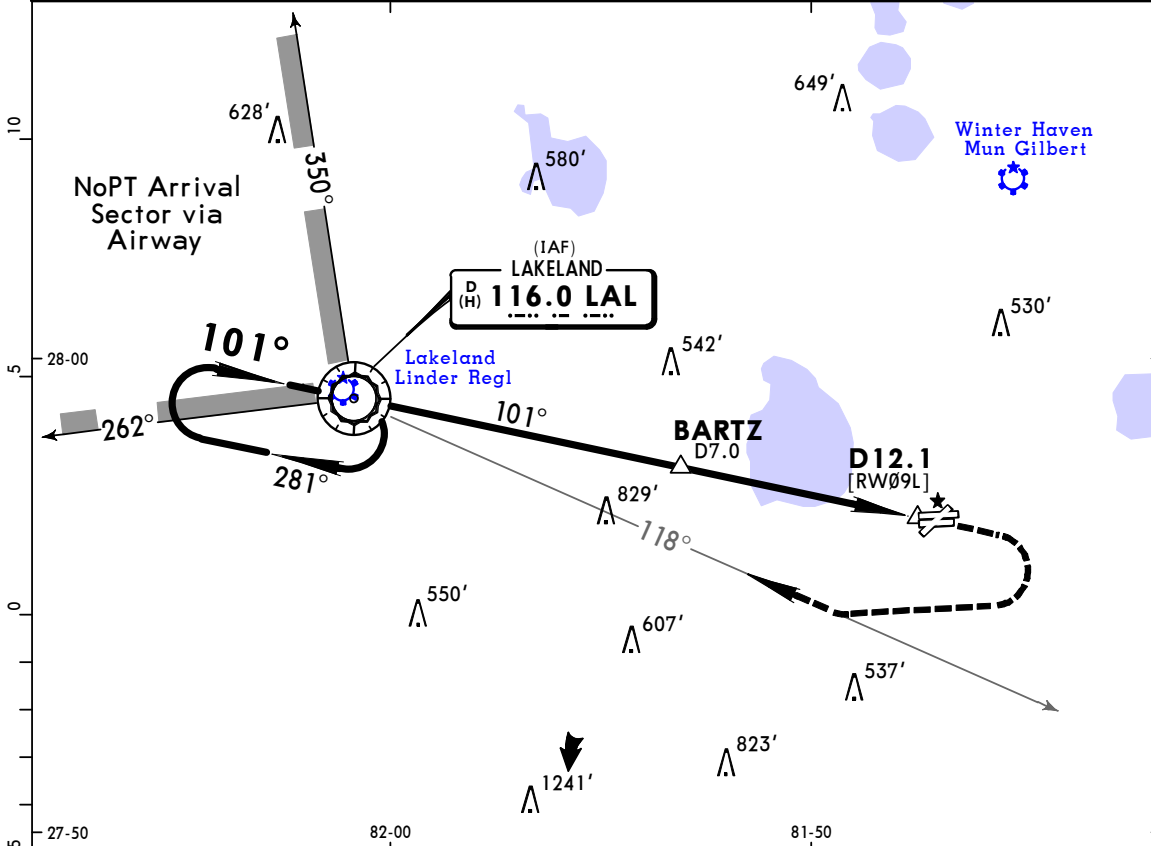
STRAIGHT-IN LANDING RWY 27R With Local Altimeter Setting				CIRCLE-TO-LAND With Local Altimeter Setting	
	LPV DA(H) 470' (345')	LNAV/VNAV DA(H) 530' (405')	LNAV MDA(H) 580' (455')	Max Kts	MDA(H)
A				90	600' (475') - 1
B	1¼	1½	1	120	
C			1¼	140	600' (475') - 1½
D			1½	165	680' (555') - 2
With Tampa Intl Altimeter Setting				With Tampa Intl Altimeter Setting	
	DA(H) 576' (451')	DA(H) 636' (511')	MDA(H) 700' (575')	Max Kts	MDA(H)
A				90	720' (595') - 1
B			1	120	
C	1¾	2	1½	140	720' (595') - 1½
D			1¾	165	800' (675') - 2¼

TERPS AMEND 1A 14 JAN 2010

CHANGES: Circling minimums.

© JEPPESEN, 2002, 2010. ALL RIGHTS RESERVED.

AWOS-3 123.77		TAMPA Approach (R) 120.65		*BARTOW Tower CTAF 121.2		*Ground 121.9	
VOR LAL 116.0	Final Apch Crs 101°	Minimum Alt BARTZ 1800' (1675')	MDA(H) (CONDITIONAL) 520' (395')	Apt Elev 125' TDZE 125'		 2700' MSA LAL VOR	
MISSED APCH: Climb to 900' then climbing RIGHT turn to 2000' inbound via LAL VOR R-118 to LAL VOR and hold.							
Alt Set: INCHES Trans level: FL 180 Trans alt: 18000' 1. Use local altimeter setting; if not received, use Tampa Intl altimeter setting. 2. Helicopter visibility reduction below 3/4 SM not authorized. 3. Pilot controlled lighting 121.2.							



Gnd Speed-Kts	70	90	100	120	140	160	REIL PAPI-L	900'	2000'	LAL via 116.0 R-118	LAL 116.0
Descent angle	3.01°	373	479	532	639	745		852	↑	↻ RT	
MAP at D12.1											

TERPS		STRAIGHT-IN LANDING		CIRCLE-TO-LAND	
		MDA(H) 540' (415') With Local Altimeter Setting	MDA(H) 660' (535') With Tampa Intl Altimeter Setting	With Local Altimeter Setting	With Tampa Intl Altimeter Setting
A	1	1		Max Kts 90	600' (475') - 1 720' (595') - 1
B				120	
C	1 1/8	1 1/2		140	600' (475') - 1 1/2 720' (595') - 1 1/2
D				165	680' (555') - 2 800' (675') - 2 1/4

TERPS AMEND 2D 18 AUG 2016